



# OVERVIEW





# Supply of Engineered Metal Products for the Construction Industry

Established in 2002, SYSTEMS INTERNATIONAL is a company specialized in the supply of engineered metal products for the construction industry with a main focus on the external envelop and internal fitouts. With offices in KSA, Lebanon and Egypt, SYSTEMS INTERNATIONAL supplies its products to many countries of the Middle East and North Africa.

SYSTEMS INTERNATIONAL adds value to its supplied product through the following services:

- Bridging the gap between the original architectural concept and the practical final product by coordinating engineering efforts between all parties -Architect, Contractor and Fabricator.
- Using class A reliable suppliers that have been selected and vetted throughout many years of experience and cooperation.
- Conducting a full and complementary supply chain coordination carried out by experienced and dedicated teams through perseverance and close follow-up.
- Conducting quality control procedured throughout the supply chain process using in-house experienced team and renowned international quality control institutes.

SYSTEMS INTERNATIONAL's mission is to deliver innovative and sustainable building material, which integrates with the development pace of the construction industry in the region. Hence, delivering value to our customers and aligning our business goals, needs and operations with our social responsibility.



# PRODUCTS



**SYSTEMS**  
*International*



## ***Exterior and Interior Special Products***

- **Insulated / Fire Rated Decorative Sandwich Panel**  
Exterior Wall Cladding, Roof & Internal Partitions
- **Metal Acoustic Panel**  
Ceilings, Interior Wall Cladding Decoration, Partitions
- **Stainless Steel Handrails and Balustrade Systems.**  
Stainless Steel Framless Accessories, Spider Fittings, Door Hinges, Handles.
- **Architectural Sun Louvers / Sun Shades.**
- **Architectural Metal Cladding**  
3D Shapes Aluminum, Stainless Steel and Brass Panels.  
Perforated Solid Aluminum Sheets.
- **Metal Cladding Panels .**  
Aluminum Composite Panels.
- **Exterior & Interior Wall Cladding, Column Ceiling, Partition, Cladding.**  
Aluminum Honey Comb & composite Panels.
- **Honeycomb Special Finish and/or Stone Laminate Face.**
- **Expanded Metal Mesh.**  
Fencing & Façade Solutions.





# PROJECTS



**SYSTEMS**  
*International*



## Bus Rapi Transit, BRT

**Location** | Riyadh, KSA

**Client** | The Royal Commission of Riyadh City

**Consultant** | Dar Al Handasah-Riyadh

**Contractor** | Saudi Co. /

**Subcontractor** | Madarioun-Ajwad

**Contractor** | YUKSEL /

**Subcontractor** | Al Ghurair

**Supplied Product** |

50,000 sqm of Cladding Panels,  
15,000 sqm of Internal Metal Acoustic Ceiling ,  
Stainless Steel Furniture.



**SYSTEMS**  
*International*





# PROJECTS



## PEDESTRIAN BRIDGE

**Location** | Riyadh, KSA

**Client** | The Royal Commission of Riyadh City

**Consultant** | Dar Al Handasah-Riyadh

**Contractor** | Saudi Co. / **Subcontractor** | Madarioun -Ajwad

**Contractor** | YUKSEL / **Subcontractor** | Al Ghurair

**Supplied Product** |

50,00 sqm of Metal Cladding  
10,000 lm of Stainless Steel.



**SYSTEMS**  
*International*



## Community Bus Station, CBS

**Location** | Riyadh, KSA

**Client** | The Royal Commission of Riyadh City

**Consultant** | Dar Al Handasah-Riyadh

**Contractor** | Saudi Constructioners / **Subcontractor** | Zamil Steel

**Supplied Product** |

300 Units of Metal Cladding & Doors

**SYSTEMS**  
*International*





## Riyadh Metro - Line 5

**Location** | Riyadh, KSA

**Client** | The Royal Commission of Riyadh City

**Consultant** | RAMPED

**Contractor** | Fast Consortium / **Subcontractor** | Cube Metal

**Supplied Product** |

5,000 sqm of External Metal Pergolas



**SYSTEMS**  
*International*



## Riyadh Metro - Line 5 Underground Parking

**Location** | Riyadh, KSA

**Client** | The Royal Commission of Riyadh City

**Consultat** | RAMPED

**Contractor** | Fast Consortium / **Subcontractor** | Cube Metal

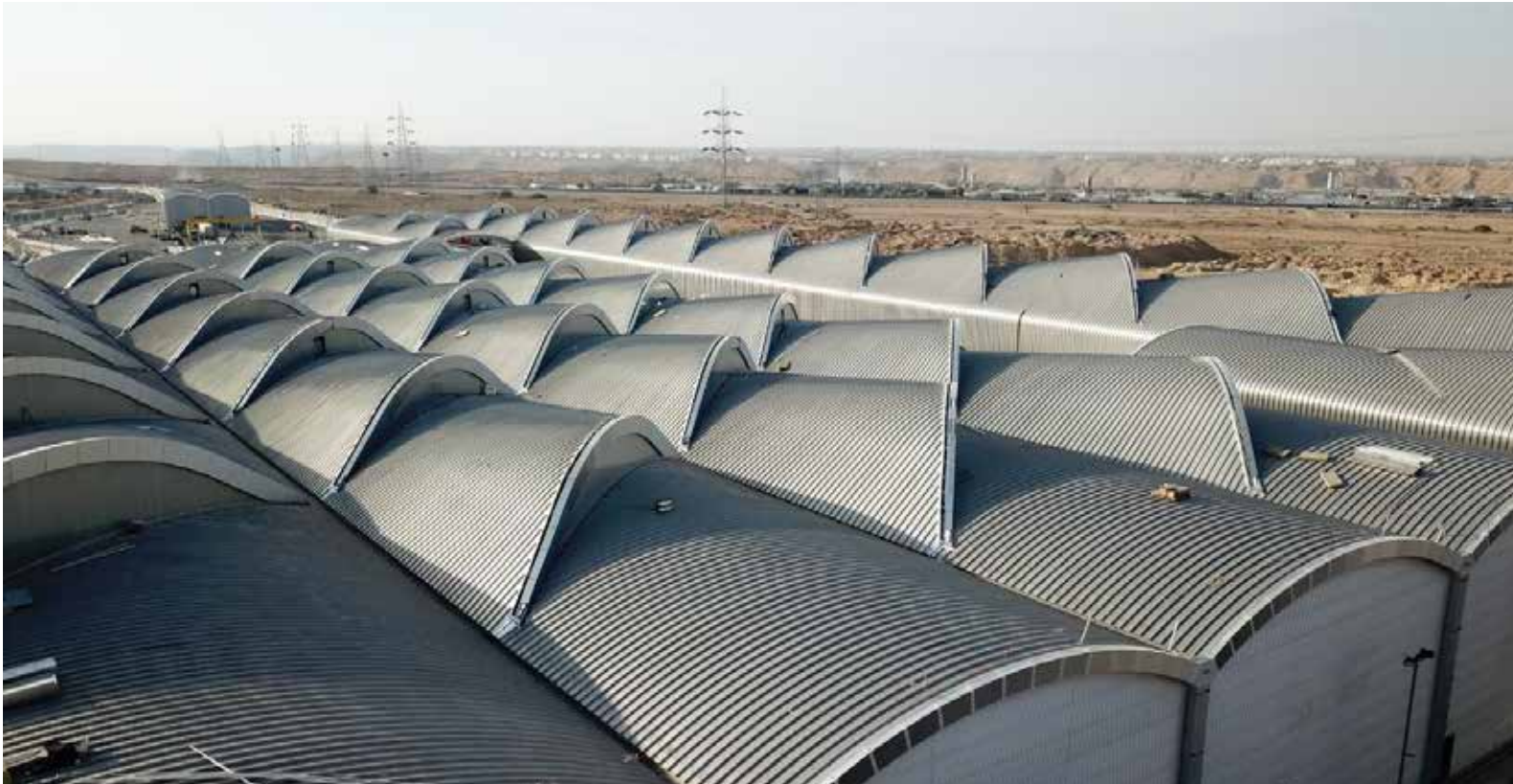
**Supplied Product** |

16,000 sqm of Aluminum Composite Cladding



**SYSTEMS**  
*International*





## Riyadh Metro - Line 3 - West and East Depots

**Location** | Riyadh, KSA

**Client** | The Royal Commission of Riyadh City

**Consultant** | RAMPED

**Contractor** | ANM / **Subcontractor** | ANM

**Supplied Product** |

4,000 sqm Insulated Fire Rated  
Sandwich Panels Ceiling and Walls.

**SYSTEMS**  
*International*





## Qatar Foundation QSTP Tech 4

**Location** | Doha, Qatar

**Client** | Qatar Foundation  
**Consultant** | Qatar Foundation  
**Contractor** | Butec & Murray  
**Subcontractor** | Alumco Qatar

**Supplied Product** |

5,000 sqm Fire Rated Wall Sandwich Panels,  
1,600 sqm Architectural Expanded Metal Mesh

**SYSTEMS**  
*International*



## King Faisal University – Stadium

**Location** | Ahsa'a, KSA

**Client** | KFU

**Contractor** | Hatco

**Subcontractor** | Arabian Aluminum Company-Alumco

**Supplied Product** |

9,000 sqm of 3D Shaped Rockwool  
Sandwich Wall Panels,  
2,000 sqm of aluminum Composite Cladding.



**SYSTEMS**  
*International*



## King Abdulaziz University - Sports Center

**Location** | Jeddah, KSA

**Client** | King Abdulaziz University

**Consultant** | Fluor

**Contractor** | Al-Mabani General Contractors

**Supplied Product** |

6,000 sqm of Fire Rated Decorative  
Rockwool Sandwich Wall Panels



**SYSTEMS**  
*International*





## King Fahad Medical City

**Location** | Riyadh, KSA

**Client** | King Abdulaziz University

**Consultant** | Dar Al Riyadh

**Contractor** | Latifia

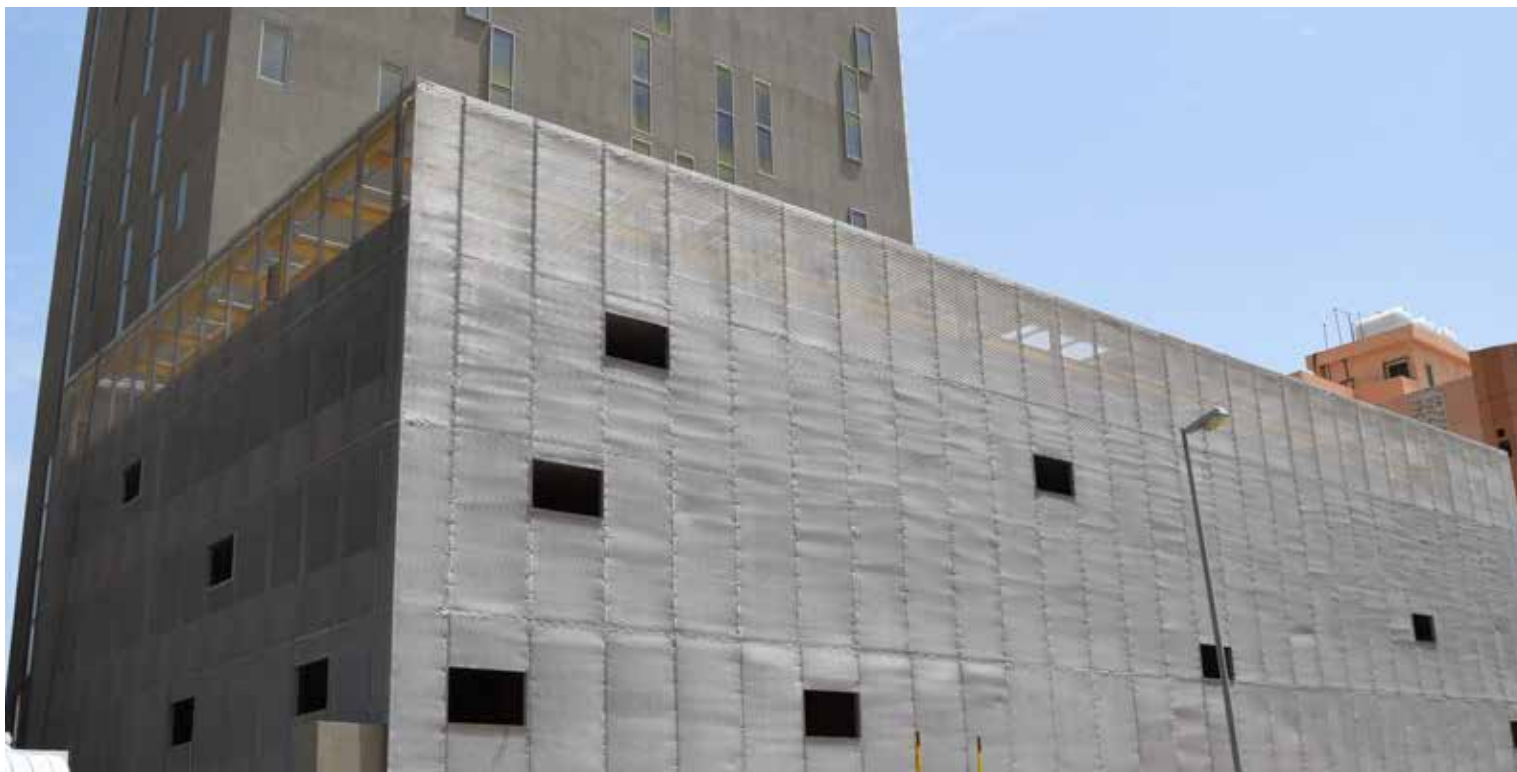
**Subcontractor** | Arabian Aluminum Company-Alumco / Fateco

**Supplied Product** |

17,000 sqm of Aluminum Composite Panels.



**SYSTEMS**  
*International*



## PMDC HQ - Car Park

**Location** | Jeddah, KSA

**Client** | PMDC

**Consultat** | Saudi Diyar

**Contractor** | MOHAP

**Subcontractor** | Arabian Aluminum Company-Alumco

**Supplied Product** |

2,500 sqm of expanded Metal Façade



**SYSTEMS**  
*International*



## Hamad General Hospital

**Location** | Doha, Qatar

**Client** | Qatar Foundation

**Consultant** | Khatib & Alami / KEO International

**Contractor** | Midmac Contracting Co.

**Subcontractor** | Alumco Qatar

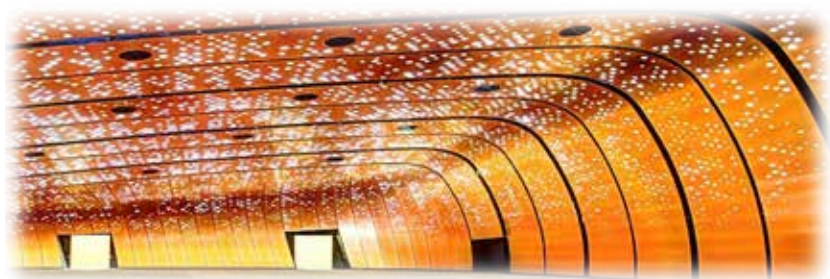
**Supplied Product** |

12,500 sqm of Perforated Aluminum Sun Screen Louvers



**SYSTEMS**  
*International*





## KACWC

**Location** | Dhahran,, KSA

**Client** | Aramco

**Consultant** | Aramco

**Contractor** | Saudi Oger

**Subcontractor** | Arabian Aluminum Company-Alumco

**Supplied Product** |

2,800 sqm of Acoustic Fire Rated,  
Stainless-Steel Wall Panels



## Salama Center

**Location** | Jeddah, KSA

**Client** | Sheikh Melahy Bin Salama

**Consultant** | Saudi Architect

**Contractor** | SBCM

**Subcontractor** | Arabian Aluminum Company-Alumco

**Supplied Product** |

5,000 sqm of Aluminum Composite Panels



## Saudi Hollandi Bank

**Location** | Jeddah, KSA

**Client** | Saudi Hollandi Bank

**Consultant** | PMDC

**Contractor** | Ahmad Al Kadi Est

**Subcontractor** | Arabian Aluminum Company-Alumco

Supplied Product |

3,000 sqm of Aluminum Cladding

**SYSTEMS**  
*International*





## Binzagr Coro Factory

**Location** | Jeddah, KSA

**Client** | Binzagr Coro  
**Consultant** | Hyder El Khereiji  
**Contractor** | Rafik Kreidieh  
**Subcontractor** | Rafik Kreidieh

**Supplied Product** |

6,100 sqm of Fire Rated Decorative  
Rockwool Sandwich Wall Panels and Internal Partitions.



**SYSTEMS**  
*International*



## MARS Chocolate Factory

**Location** | King Abdullah Economic City, Rabigh-KSA

**Client** | Mars Chocolate Factory  
**Consultant** | Hyder El Khereiji / EMAAR  
**Contractor** | Saudi Amana  
**Subcontractor** | Saudi Amana

**Supplied Product** |

9,000 sqm of Fire Rated Decorative  
Rockwool Sandwich Wall Panels





## Al Faisaliyah Mall

**Location** | Riyadh, KSA

**Client** | Al Faisaliyah Mall

**Consultant** | Arcadis

**Contractor** | Salini SA

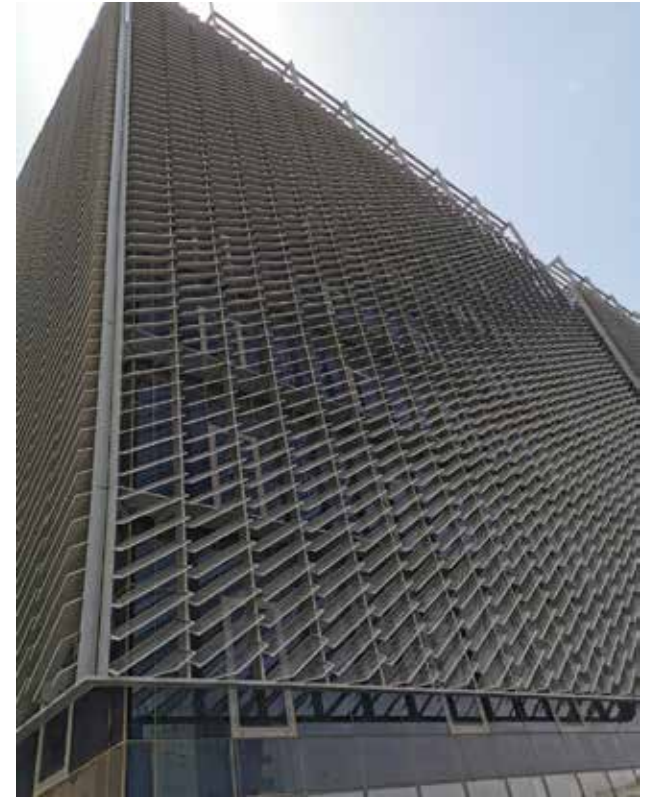
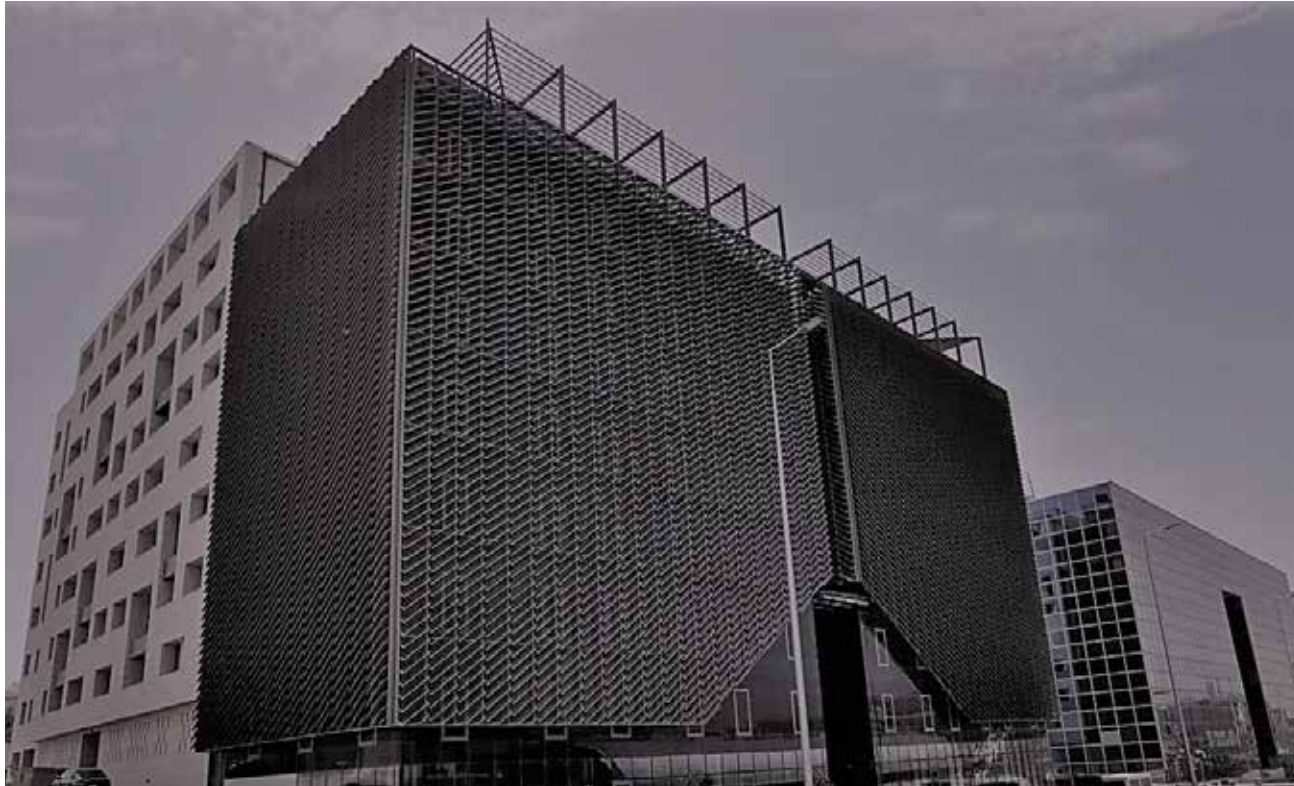
**Supplied Product** |

2,000 sqm of Internal False Ceiling & Gypsum Boards



**SYSTEMS**  
*International*





## Al Munajem Building

**Location | Riyadh, KSA**

**Client |** Al Munajem Group  
**Subcontractor |** Nafco

**Supplied Product |**  
3,400 sqm of Metal Expanded Mesh



## Red Sea Mall

**Location |** Jeddah, KSA

**Client |** Red Sea Market

**Consultant |** Saudi Diyar Consultants

**Contractor |** Al Saad - Al Mabani JV

**Subcontractor |** Arabian Aluminum Company-Alumco



**Supplied Product |**

12,000 sqm of Aluminum Cladding,  
5,000 sqm of Frameless and Spider Fittings







## Princess Noura University, PNU

**Location** | Jeddah, KSA

**Client** | Ministry of Finance; Ministry of Higher Education

**Consultant** | Dar Al Handasah

**Contractor** | Saudi Oger Ltd.

**Subcontractor** | Arabian Aluminum Company-Alumco

Supplied Product |  
3,000 lm of Handrails







## Ministry of Interior, MOI

**Location** | Riyadh, KSA

**Client** | Ministry of Interior

**Consultant** | Saudi Diyar consultants

**Contractor** | Bin Laden Group

**Subcontractor** | Arabian Aluminum Company-Alumco

Supplied Product |

8,000 sqm of Aluminum Composite Cladding



## IKEA, Al Qassim and Al Kharj Branches

**Location |** Al Qassim-Al Kharj, KSA

**Client |** IKEA Saudi Arabia  
**Consultant |** PMDC  
**Contractor |** Greenlines

**Supplied Product |**

6,000 sqm of Fire Rated Decorative  
Rockwool Sandwich Wall Panels



**SYSTEMS**  
*International*





## Haramain High Speed Rail Station

**Location** | Mekka, KSA

**Client** | Saudi Railways Organizatio

**Consultant** | Dar Al Riyadh

**Contractor** | Saudi Oger

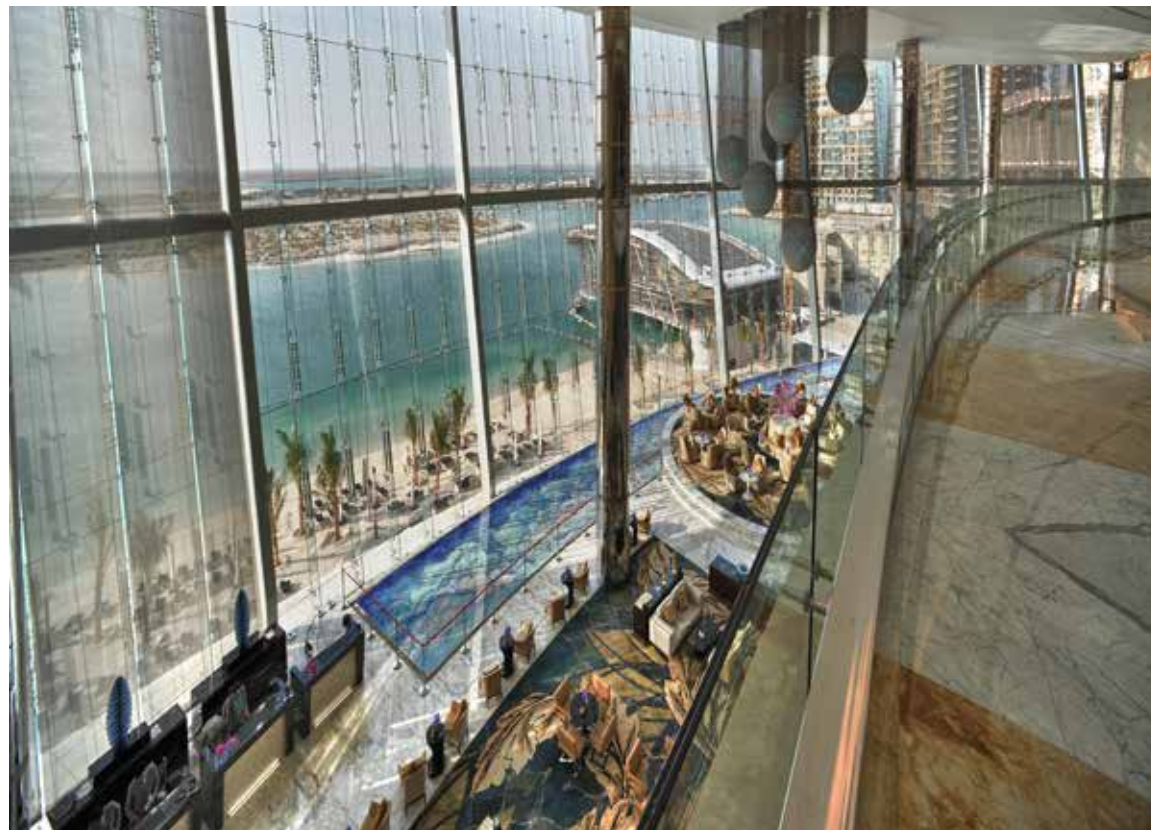
**Subcontractor** | Arabian Aluminum Company-Alumco

**Supplied Product** |

1,600 sqm of Stainless Steel Acoustic Grill

**SYSTEMS**  
*International*





## Etihad Towers

**Location** | Abu Dhabi, UAE

**Client** | Sheikh Suroor Bin Mohammad Al Nahyan

**Contractor** | ACC UAE

**Consultant** | DBI Design

**Subcontractor** | Alumco Group

Supplied Product |

3,000 sqm of Stainless Steel  
Spider Fittings

**SYSTEMS**  
*International*



## Cayan Tower (Infinity Tower)

**Location** | Dubai, UAE

**Client** | Cayan Group

**Contractor** | Arabtec

**Consultant** | Skidmore, Owings and Merrill

**Subcontractor** | Janghu

Supplied Product |  
Aluminum Composite Cladding



**SYSTEMS**  
*International*





## Beirut & Bay Towers

**Location** | Beirut, Lebanon

**Client/ Contractor** | SV Properties

**Consultant** | Samir Khairallah and Partners

**Subcontractor** | Alumco Group

Supplied Product |

10,000 sqm of Aluminum Composite Cladding

**SYSTEMS**  
*International*





## Marc One Office Building

**Location** | Beirut, Lebanon

**Contractor** | Fakhry General Contracting

**Consultant** | Erga Group

**Subcontractor** | Alumco Group

Supplied Product |

4,000 sqm of Aluminum Composite Cladding

1,500 sqm of Stainless Steel Spider Fittings

**SYSTEMS**

***International***



## Saudia Aircraft Maintenance Hangars

**Location** | King Abdullah Economic City, Rabigh-KSA

**Client** | SAEI

**Consultant** | Dar Al Handasah

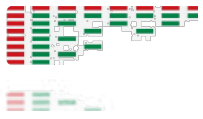
**Contractor** | TAL-JV

**Subcontractor** | Bcoms

Supplied Product |

92,000 sqm Corrugated Sandwich Panels

**SYSTEMS**  
*International*



## Yunbu Airport

**Location** | Yunbu, KSA

**Client** | Presidency of Civil Aviation

**Consultant** | Khatib & Alami

**Contractor** | Al Mabani General Contractor

**Subcontractor** | Arabian Aluminum Company-Alumco

Supplied Product |  
**8,000 sqm of Aluminum Cladding**

**SYSTEMS**  
*International*





## Madain Saleh Airport

**Location** | Madain Saleh, KSA

**Client** | General Authority of Civil Aviation

**Consultant** | Arabian Consultant Engineering Center

**Contractor** | Al Mabani General Contractor

**Subcontractor** | Arabian Aluminum Company-Alumco

Supplied Product |  
**6,000 sqm of Aluminum Cladding**

**SYSTEMS**  
*International*



## Millennium Madinah Airport Hotel

**Location** | Madina, KSA

**Client** | General Authority of Civil Aviation

**Consultant** | Dar Al Handasah

**Contractor** | Saudi Binladen Group

**Subcontractor** | Arabian Aluminum Company-Alumco / UAAC

**Supplied Product** |

6,000 qm of Fire Rated Decorative  
Rockwool Sandwich Wall Panels.

**SYSTEMS**  
*International*





## New King Abdulaziz International Airport

**Location** | Jeddah, KSA

**Client** | General Authority of Civil Aviation

**Consultant** | Dar Al Handasah

**Contractor** | Saudi Binladen Group

**Subcontractor** | Arabian Aluminum Company-Alumco / UAAC

Supplied Product |  
Aluminum Composite Cladding





## Najran Airport

**Location** | Jeddah, KSA

**Client** | General Authority of Civil Aviation

**Consultant** | Dar Al Handasah

**Contractor** | Al Mabani General Contractor

**Subcontractor** | Arabian Aluminum Company-Alumco

Supplied Product |  
Aluminum Composite Cladding







## MalaboVIP Airport

**Location** | Malabo, Africa

**Consultant** | Conser Consulting Engineers

**Contractor** | PAC International

**Subcontractor** | Alumco Group

Supplied Product |  
Aluminum Composite Cladding

**SYSTEMS**  
*International*



## Al Zahrani Building

**Location** | Jeddah, KSA

**Client** | General Authority of Civil Aviation

**Consultant** | GACA

**Contractor** | Al Mabani General Contractor

**Subcontractor** | Arabian Aluminum Company-Alumco

**Supplied Product** |

2,500 sqm of Aluminum Cladding

**SYSTEMS**  
*International*





# CONTACT US



**SYSTEMS**  
*International*



## OFFICE LOCATIONS

### Jeddah, KSA (Main Office)

Madinah Road, City Commercial  
Center, Tower C, 2nd Flr.  
POBox: 12835 jeddah 21362.  
- C.R. 4030256750  
- Tel. +966 12 6655977

### Riyadh, KSA

Zone A, 2nd Industrial City, Riyadh,  
KSA. PO Box Riyadh 11413.  
- Tel. +966 11498 0004

### Beirut, Lebanon

Khaldeh Main Road, AlWafaa bldg,  
Grd Flr. POBox: 30 - 67 Choueifat  
- C.R. 716  
- Tel. +961 5 807 307

### Alexandria, Egypt

5 el Moshir Mohamed Aly Fahmy  
street- Smouha- Alexandria  
- Tel. +201 119020600



**WEBSITE** [www.systemsinternational-me.com](http://www.systemsinternational-me.com)

## CONTACT PERSONS

### Hussein DEHAINI / Managing Partner

- Mob. (Leb.) +961 3796967  
- Mob. (KSA) +966 55 3796967  
- Mob. (China) +86 130 68866004  
[hussein.dehaini@systemsinternational-me.com](mailto:hussein.dehaini@systemsinternational-me.com)

### Firas GHADER / Area Manager-KSA

- Mob.+966 55 983 0082  
[firas.ghader@systemsinternational-me.com](mailto:firas.ghader@systemsinternational-me.com)

### Nawar MOHAMED / Area Manager-Egypt

- Mob.+201 015695259  
[nawar.mohamed@systemsinternational-me.com](mailto:nawar.mohamed@systemsinternational-me.com)



**SYSTEMS**  
*International*